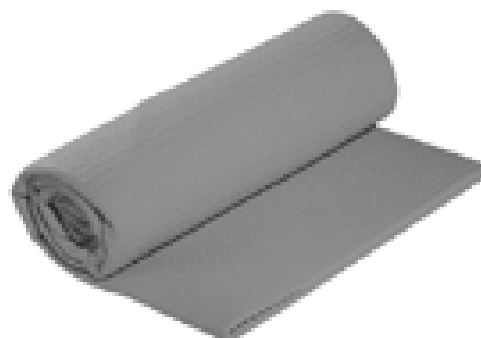
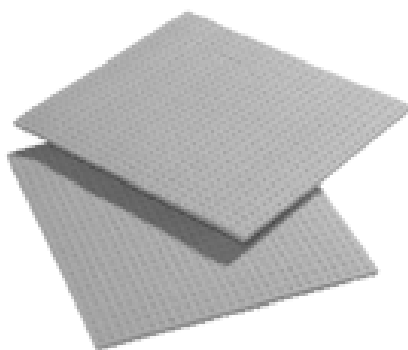


AM21 SPONGE CLOTH



The photography is not contract

Product manufactured in a ISO 9000-14000 certified SPONTEX plant



WET WIPING

PTP TEAM-E
Rev 3
10-09-08

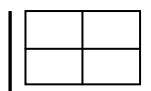
DESCRIPTION

- Flat cellulose cloth reinforced with a textile web and made with an acid regeneration process
- Easy to handle

Composition of AM21 Sponge Cloth :

Pattern:

Recto



Verso

FLAT

- ◆ Regenerated cellulose
- ◆ Cellulosic fibres
- ◆ Synthetic textile web
- ◆ Pigment colour (either: yellow - blue – green - orange)
- ◆ Softening agent
- ◆ Fungicide treatment
- ◆ Water

TECHNICAL SERVICES POLE

74, rue de St Just des Marais - 60026 BEAUVAIS - FRANCE

Tel : 00 33 3 44 06 70 84 - Fax : 00 33 3 44 48 01 20

Technical Services Pole



AM21 Sponge Cloth



Dimensions :

Name	Thickness in mm	Weight dry in g/m ²
AM21	4.0	210

Due to the natural raw materials used to make this product, the values given here are based on an average and cannot be guaranteed

PRODUCT PERFORMANCES

- **Wiping capacity :** The AM21 Sponge Cloth wiping efficiency is inversely proportional to the amount of water absorbed in use.

A preliminary wring improves wiping capacity

- **Tear resistance :** 1 daN/cm



- **Absorption :** More than 12 times its dry weight



TECHNICAL SERVICES POLE

74, rue de St Just des Marais - 60026 BEAUVAIS - FRANCE
Tel : 00 33 3 44 06 70 84 - Fax : 00 33 3 44 48 01 20

Technical Services Pole



AM21 Sponge Cloth



FOR BEST RESULTS AND MAINTENANCE

Rinse the Sponge Cloth before using for the first time in order to remove the softener

Machine washable up to 60°C with standard detergent

May be washed several times in this way without damaging the intrinsic qualities of the product



This product may be sterilised when wet without impairing its essential qualities

REGULATIONS / STANDARDISATION

✓ **Hazard regulation :**

This product is not dangerous according to Eu directive 67/548/EEC and 1999/45/EC

This data sheet has been produced on the basis of up-to-date information and for standard use. If you have specific application requirements, please contact our Technical Services Pole.